



Flat 3, 1 Vauvert

Vauvert | St Peter Port

This first floor apartment is part of a beautiful granite building in the Old Quarter of St Peter Port. The property is presented to the market in excellent condition and would be an ideal option for first time buyers or those looking for a buy-to-let. Accommodation comprises open plan lounge/kitchen/diner, double bedroom with fitted wardrobe and a bathroom. There is a secure underground parking area with an allocated space for one car. Accessed from Burnt Lane is a rear communal courtyard.

£260,000

1 BEDROOM

1 BATHROOM

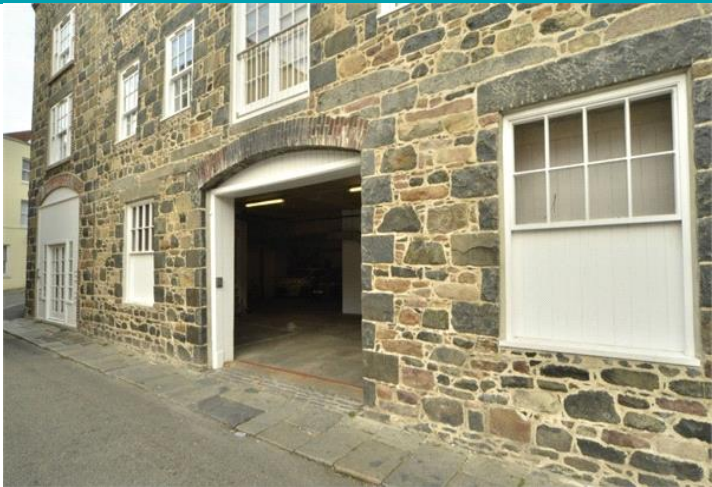
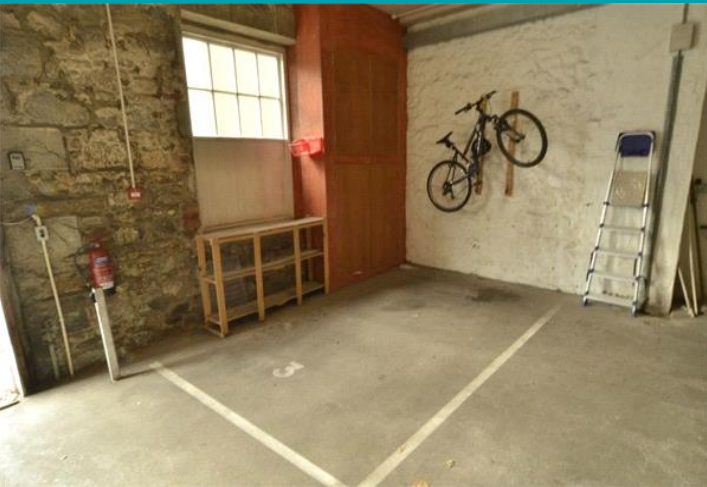
1 RECEPTION

Shields
& Rutland

PHOTOS



PHOTOS



SPECIFICATIONS



Entrance Hall

8' x 3' 8" (2.43m x 1.12m)

Lounge/Kitchen/Diner

4.88m x 4.27m (16' x 14')

Bathroom

1.75m x 1.70m (5' 9" x 5' 7")

Bedroom

12'6" x 10'7" (3.84m x 3.16m)

Garden

Communal paved courtyard which is accessed through a side gate off of Burnt Lane.

Garage

Secure parking for one car.

PRICE INCLUDES

- Carpets, curtains/blinds and light fittings.

SPECIAL FEATURES

- Double glazing
- Good storage
- Secure parking area

SERVICES

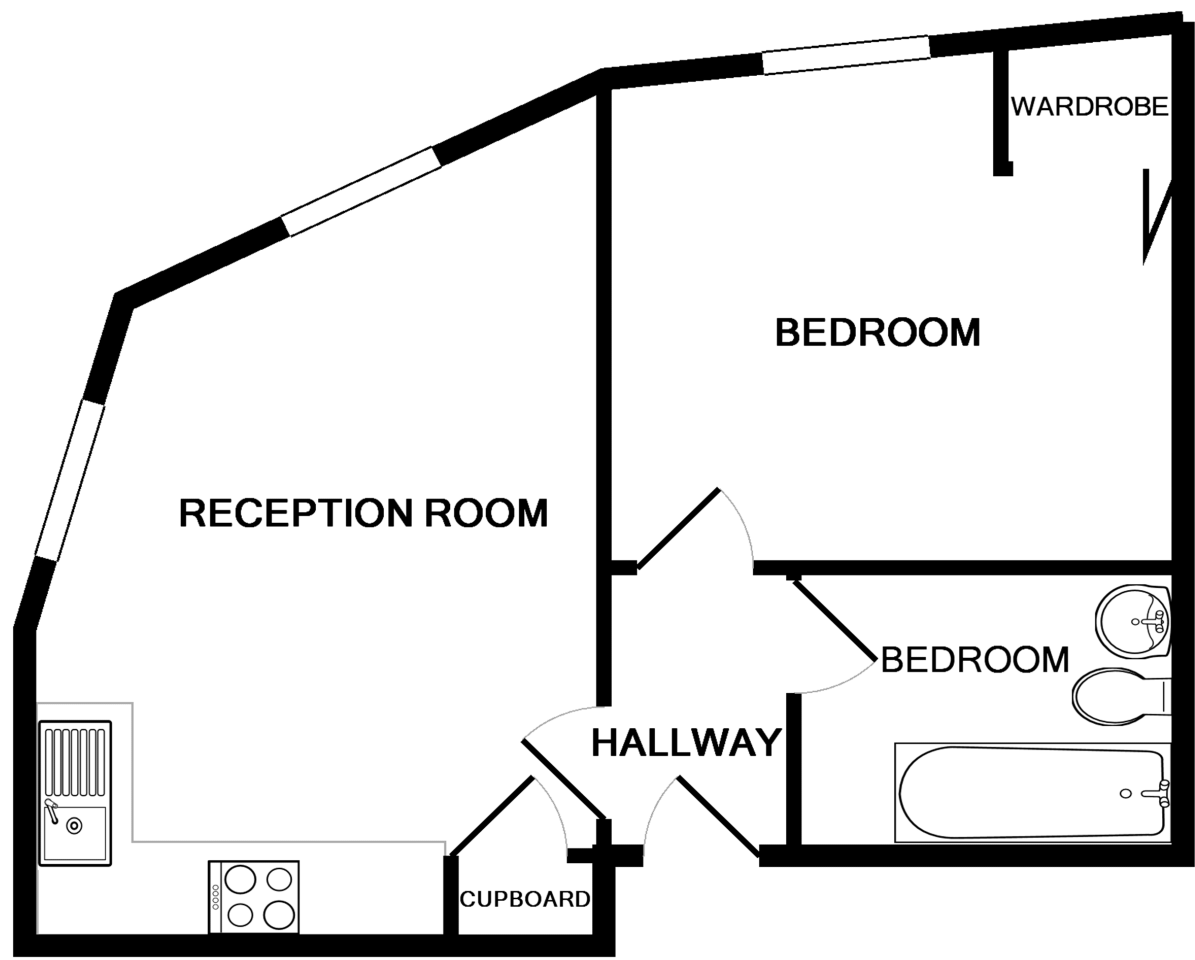
Mains water, electricity and drainage. Night storage heating.

APPLIANCES INCLUDED

- Ariston four ring hob
- Extractor fan
- Hotpoint single oven
- Hotpoint washer/dryer
- Integrated fridge/freezer

SCHOOL CATCHMENT

- Vauvert Primary School
- Mare de Carteret High School



FLAT , VAUVERT

Whilst every attempt has been made to ensure the accuracy of the floor plan contained here, measurements of doors, windows, rooms and any other items are approximate and no responsibility is taken for any error, omission, or mis-statement. This plan is for illustrative purposes only and should be used as such by any prospective purchaser. The services, systems and appliances shown have not been tested and no guarantee as to their operability or efficiency can be given
Made with Metropix ©2017