



Flat 2

16 Pedvin Street | St Peter Port

This first floor apartment is offered to the market in move-in condition. The property is conveniently located in a one-way street within a few minutes walk from the town centre and benefits from good living space and a small courtyard. Accommodation comprises open plan lounge/kitchen/diner, bedroom, study and a bathroom. There is also good on-street parking in the area. This is an ideal option for first-time buyers or those looking for a buy-to-let.

1 BEDROOM

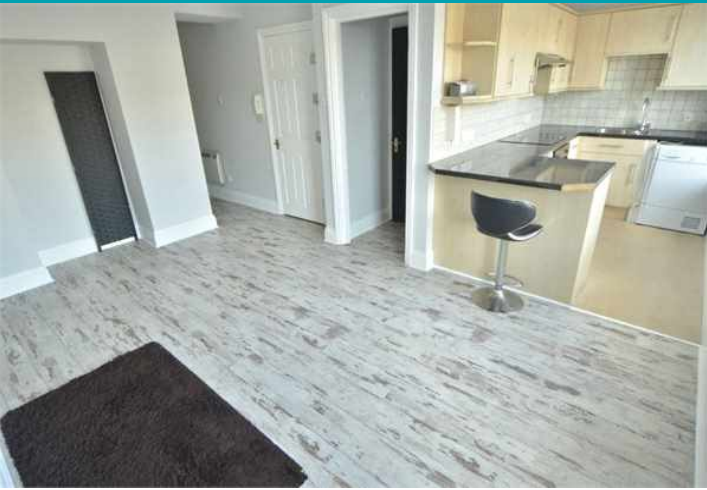
1 BATHROOM

1 RECEPTION

£215,000

Shields
& Rutland

PHOTOS



PHOTOS



SPECIFICATIONS



Living Room

14' 9" x 11' 2" (4.50m x 3.40m)

Kitchen

10' 2" x 6' 3" (3.10m x 1.90m)

Rear Hall

10' 2" x 2' 7" (3.10m x 0.80m)

Bedroom 1

13' 1" x 10' 2" (4.00m x 3.10m)

Study

7' 9" x 6' 7" (2.36m x 2.00m)

Bathroom

6' 7" x 6' 3" (2.00m x 1.90m)

Courtyard

A small gravel courtyard can be accessed via the bedroom.

PRICE INCLUDES

- Curtains, carpets and light fittings

SPECIAL FEATURES

- Courtyard garden
- Double glazing
- Study

SERVICES

Mains drain, electricity and water.
Electric central heating.

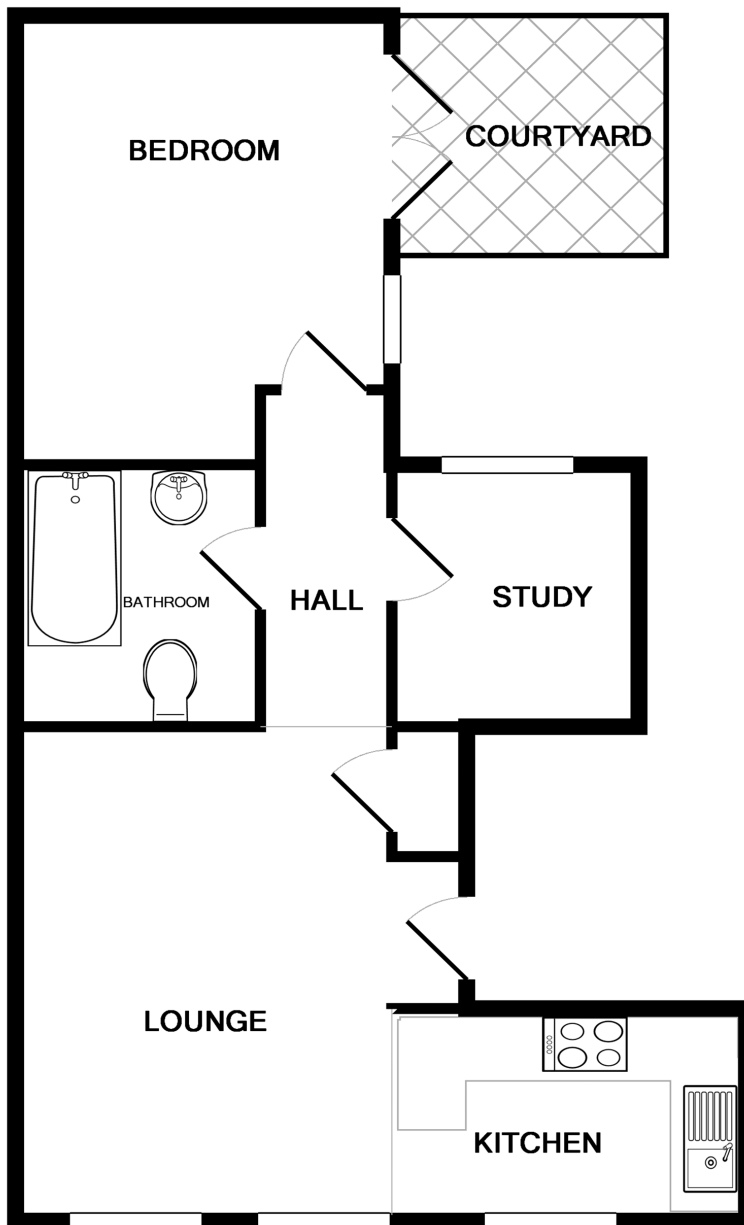
APPLIANCES INCLUDED

- Single oven
- Belling hob
- Hotpoint fridge
- Zanussi freezer
- Indesit tumble dryer

SCHOOL CATCHMENT

- Vauvert Primary School
- La Mare de Carteret High

FLOORPLAN



FLAT 2, 16 PEDVIN STREET

Whilst every attempt has been made to ensure the accuracy of the floor plan contained here, measurements of doors, windows, rooms and any other items are approximate and no responsibility is taken for any error, omission, or mis-statement. This plan is for illustrative purposes only and should be used as such by any prospective purchaser. The services, systems and appliances shown have not been tested and no guarantee as to their operability or efficiency can be given

Made with Metropix ©2020

T 01481 714445

E info@shieldsandrutland.gg

Shields & Rutland, 31 Glatigny Esplanade,
St. Peter Port, Guernsey, GY1 1WR

shieldsandrutland.gg

Shields
& Rutland

OPENING DOORS SINCE 1993