



Flat 4

15 Allez Street | St Peter Port

Offered to the market in immaculate condition is this first floor apartment. Situated in a convenient St Peter Port location, just five minutes walk to the centre of town, the property benefits from being non-road facing and overlooks the rear communal garden.

Accommodation comprises lounge/diner, double bedroom, kitchen and a shower room. There is good on-street parking nearby. This is ideal for first time buyers or those looking for a buy-to-let.

1 BEDROOM

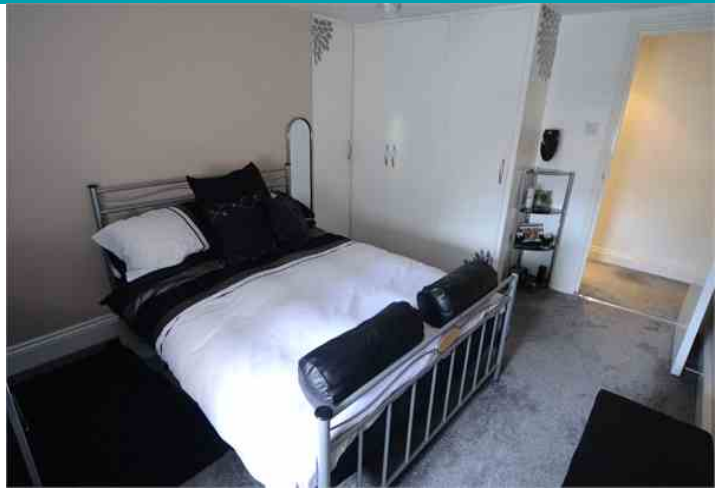
1 BATHROOM

1 RECEPTION

£235,000

Shields
& Rutland

PHOTOS



SPECIFICATIONS



Entrance Hall

Doors to all rooms.

Kitchen

9'3" x 8'4"

Bedroom

12'5" x 9'9"

Shower Room

12'11" x 4'6"

Lounge/Diner

16'3" x 10'9"

Garden

The apartment benefits from a large communal garden situated to the rear.

PRICE INCLUDES

- Curtains, carpets and light fittings

SPECIAL FEATURES

- Double glazing
- Spacious accommodation

SERVICES

Mains drains, water and electricity.

APPLIANCES INCLUDED

- To be agreed at sale

SCHOOL CATCHMENT

- Vauvert Primary school
- Mare de Carteret High School

